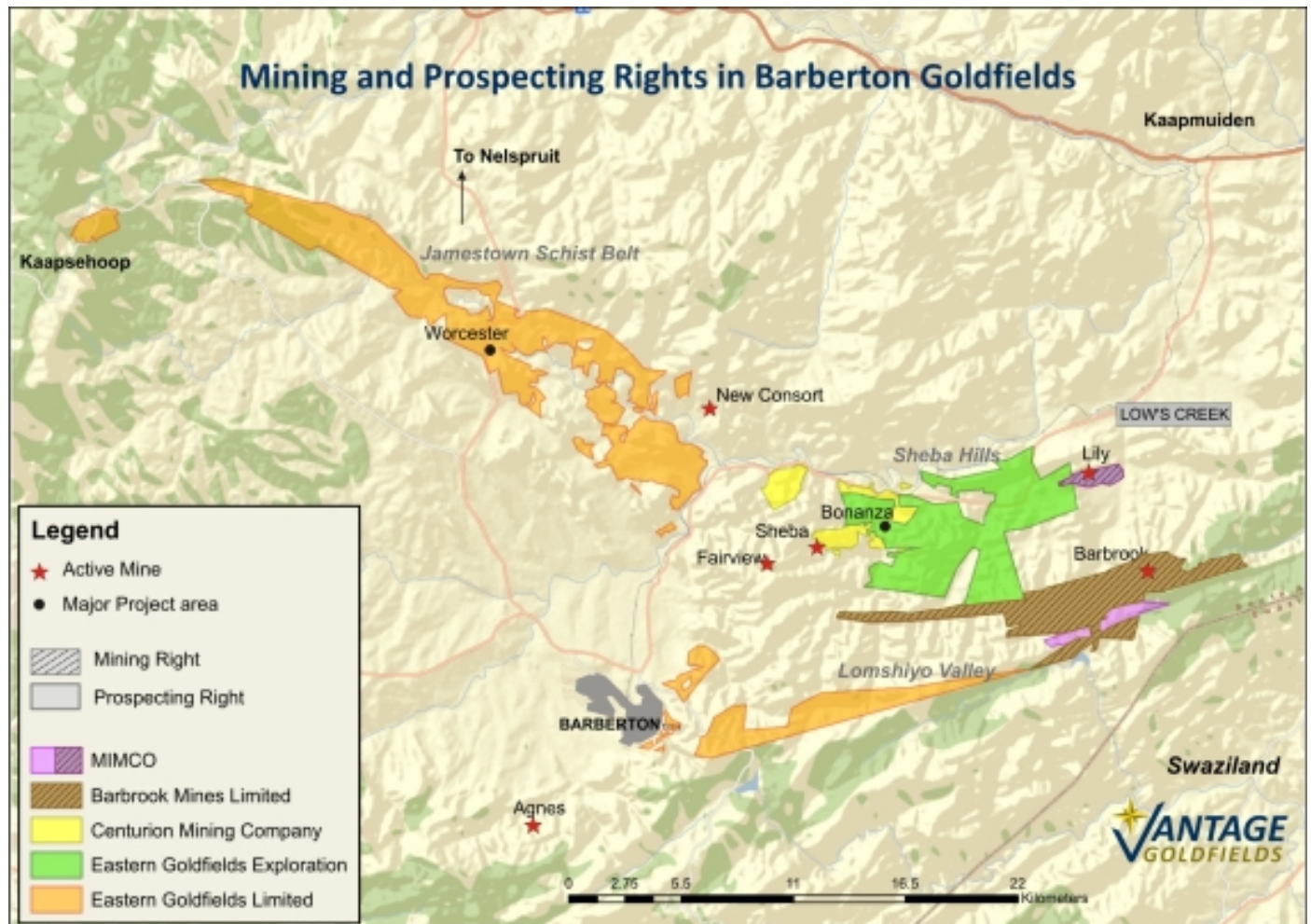


The Company's mineral properties, or mineral rights, are all located in the greenstone belt of the Barberton Mountain Land area in the Mpumalanga Province, South Africa. These rights are registered to the Company's subsidiary corporations as illustrated below:



All of the properties have adequate access to support the Company's future mining operations. The required source of power utilized or to be utilized with respect to each of the Company's properties is presently available from Eskom, the national South African power company.

The mineral rights comprise an area of approximately 50km x 30km of which the mining titles cover some 167km<sup>2</sup> and are summarized as follows:

**Vantage Goldfields**

**Mining Titles Summary**

**MINING TITLE**

**COMPANY**

**Claims**

**Area**

**No.**

**hectares**

**acres**

Eastern Goldfields Limited

14,518

8,635

21,337

Eastern Goldfields Exploration (Pty) Ltd

6,772

4,028

9,953

Centurion Mining Company (Pty) Limited

1,367

## Mineral Rights

---

813

2,009

Makonjwaan Imperial Mining Company (Pty) Limited

1,040

619

1,529

Barbrook Mines Limited

4,335

2,578

6,372

**TOTAL**

**28,032**

**16,673**

**41,200**

**COMPANY**

**Surface Rights**

**hectares**

**acres**

Eastern Goldfields Limited

-

33

82

Eastern Goldfields Exploration (Pty) Ltd

-

0

0

Centurion Mining Company (Pty) Limited

-

28

69

Makonjwaan Imperial Mining Company (Pty) Limited

-

## Mineral Rights

---

53

131

Barbrook Mines Limited

-

231

572

**TOTAL**

-

**345**

**854**

**COMPANY**

**Dump Permits**

hectares

acres

Eastern

Goldfields Limited

-

5

12

Eastern Goldfields Exploration (Pty) Ltd

-

0



0

Centurion Mining Company (Pty) Limited

-

22

55

Makonjwaan Imperial Mining Company (Pty) Limited

-

0

0

Barbrook Mines Limited

-

0

0

**TOTAL**

-

**27**

**67**